

HOTLINE



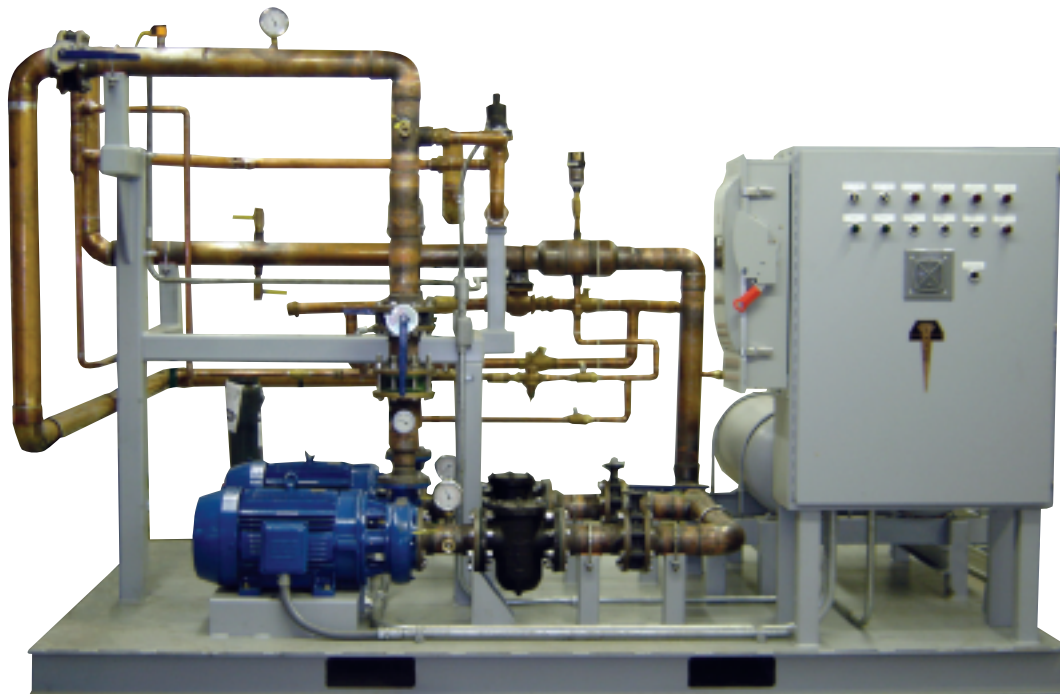
EMSCO Custom Water-Cooling Systems



Custom designed water systems give flexibility to often considered standard components for cooling applications

The major part of any water-cooled system is the water recirculation system. It is the water system that will keep the critical components properly cooled.

Cooling is essential to prevent overheating of the melt system. No one has to be told of the troubles that arise when heat sensitive systems overheat. EMSCO, because of its extensive experience in repairing and manufacturing induction and arc furnace equipment, has the unique capabilities of engineering a totally integrated water system that will be fully compatible with any furnace or induction system.



BULLETIN M24/1M/0408

Water Systems

Types

The modular line of EMSCO water systems range in size from 15 GPM to 2000 GPM. They can be designed with an open or closed loop and can be refrigerated for high ambient environments. In addition, the water system can be completely automated to run off of a computer, PLC, or can be completely manually operated.

Design

All EMSCO water systems are designed with the emphasis on performance and ease of maintenance and operation. Each system is fitted with test ports for a portable analyzer to check flow, pressure differential across components, pump flow, wear and efficiency. All water systems are constructed in modular form, prewired and piped ready to drop in place, interconnect the load and cooling components to plant utilities and start up.

All modular construction is designed around ease of maintenance, reliability and operation. In addition to manufacturing new water systems, EMSCO can retrofit your existing system with an upgraded design and provide field service and engineering assistance for existing water system problems.

All new water systems offer a full one-year warranty, regional inventories, personnel training, preventive maintenance program and engineering start-up. An optional preventive maintenance service contract is also available. Not only do you need a water system, but you need the right water system, a water system custom designed and sized to suit your particular conditions, needs and space requirements. Consult your regional EMSCO office.

EMSCO is ready when you need us...every day.

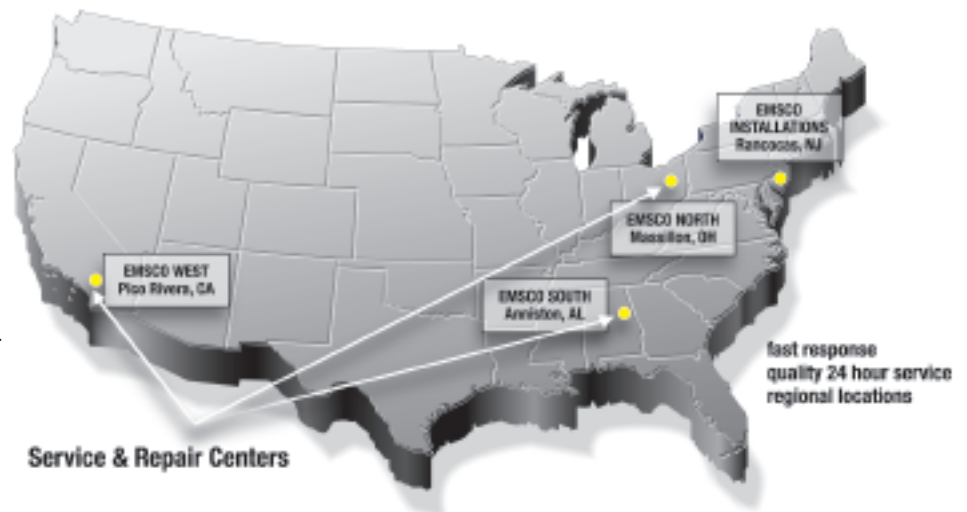
EMSCO's Commitment to you

KNOWLEDGE: EMSCO will begin each project with a customer-focused understanding of the problem to be solved and a soundly engineered approach to the solution.

COST: EMSCO will, when possible, offer more than one level of service and will explain the costs and compromises associated with each. Every option we propose will meet industry standards for safety.

QUALITY: EMSCO will understand and meet the quality expectations agreed to at the start of the project. Warranties will be explained and will set the standard for the industry.

OUR GOAL: EMSCO will provide quality services at reasonable prices so that our customers have the competitive edge in their markets.



NATIONWIDE TOLL-FREE NUMBERS

Repair Centers - 877.77.EMSCO (773.6726) | Installations - 800.858.7030

www.emsco.com